

Firmware Loading Notice

Survey/Mapping

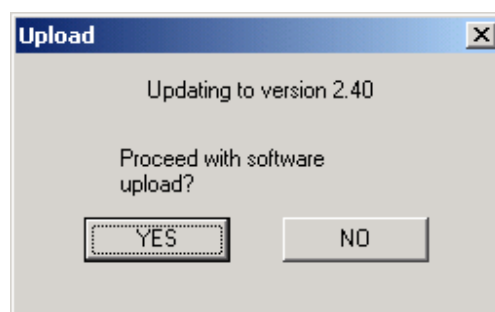
Date: May 27, 2004
Product: ProMark 2
Subject: Version 2.40
Number: ProMark 2 2004_02 updated

Important Notes :

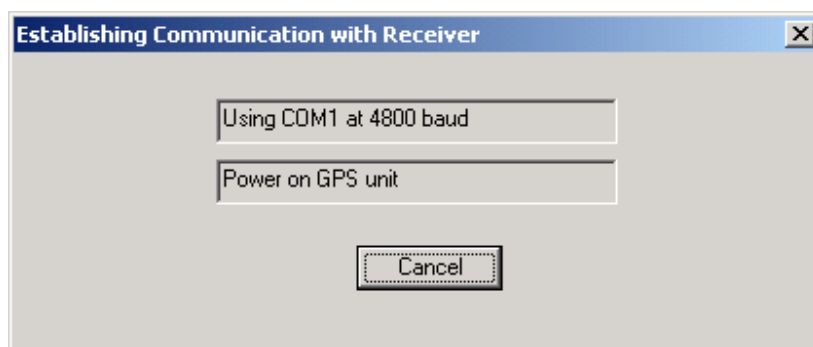
- ***Download all data from the receiver before performing firmware upgrade.***
- ***If at the end of the firmware upgrade the receiver stays in “Software upgrade” configuration, reboot it by pressing simultaneously “Mark”, ESC” and “Enter” keys.***
- ***After upgrading the receiver screen may be very dark. Switch the receiver Off then On and adjust the contrast to the desired setting.***

The **customer** needs to perform the following steps to upload firmware version 2.4.

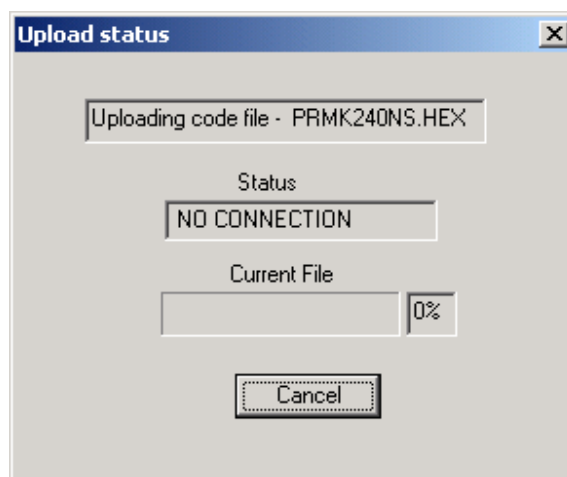
1. To avoid interruption during the uploading process, use new batteries.
2. Connect the ProMark2 to the PC serial port.
3. Turn on the ProMark2
4. Go to the Navigation mode/Setup/Baud Rate menu and set the baud rate to 19200bps. (If the baud rate is more than 19200bps, the mapgup software cannot find the receiver).
5. Run <magup.exe>
6. Answer <YES> to the question, “Proceed with software upload?”



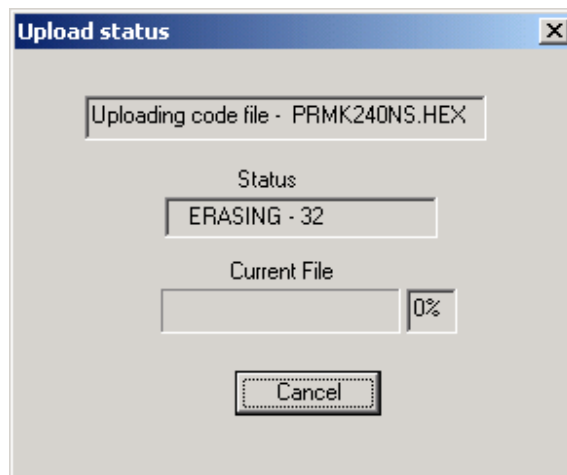
7. The communication with the receiver is establishing



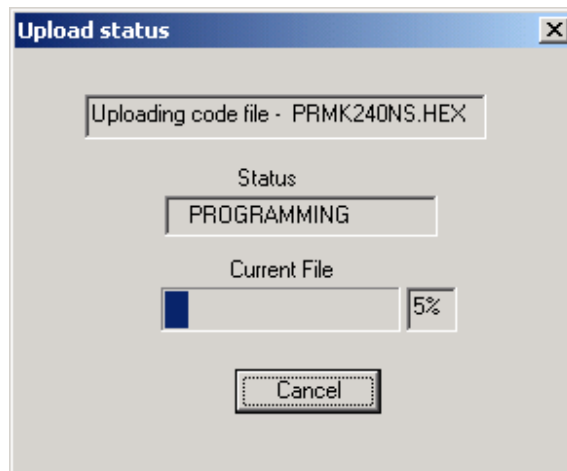
8. The initial status display will show **NO CONNECTION** as the connection is being established.



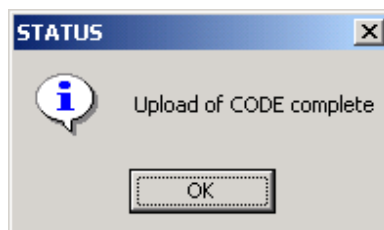
9. The status display will show **ERASING ...** as the current firmware is being removed from the ProMark2.



10. The status display will show **PROGRAMMING**, the percentage bar will turn blue, and the percentage value will increase to **100%** as the firmware is being uploaded to the ProMark2. The ProMark2 will be automatically powered off at the end of uploading process.



11. The status dialog will show **Upload of CODE complete** when programming is done. Select **<OK>** to continue.





12. Select <**File**> from the menu. Select <**Exit**> to exit the program.
13. Go to the **About** screen on the ProMark2 (Navigation mode) to check the uploaded version of the firmware.